

Managing TOSIBOX Keys

e a s i n e s s w i t h s e c u r i t y

connected by

TOSIBOX®

Topics

- 1. Sub keys**
- 2. Remote serialization**
- 3. Naming and organizing keys**
- 4. Backup Keys**

Master and Sub Keys

- *Master Key* = A Key that has rights to serialize additional (Sub) Keys to a Lock/Locks, and take new Locks into use
- *Sub Key* = A Key that has restricted rights: can only connect to a Lock but cannot serialize additional Keys nor take new Locks into use
- The Key that is first serialized with a Lock (physical serialization) becomes the *Master Key* for that Lock
- Additional Sub Keys can be created with the Master Key using TOSIBOX Key on a PC/Mac

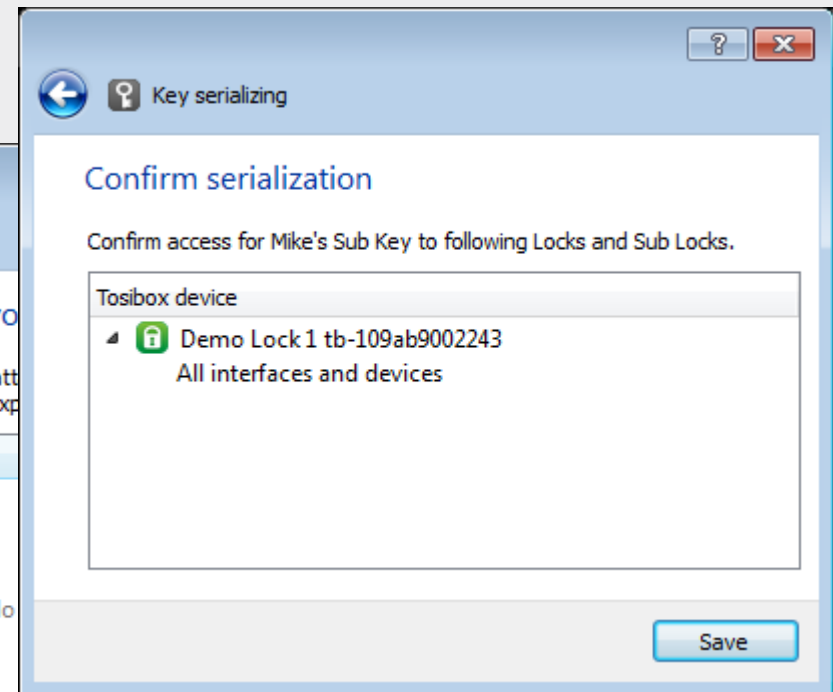
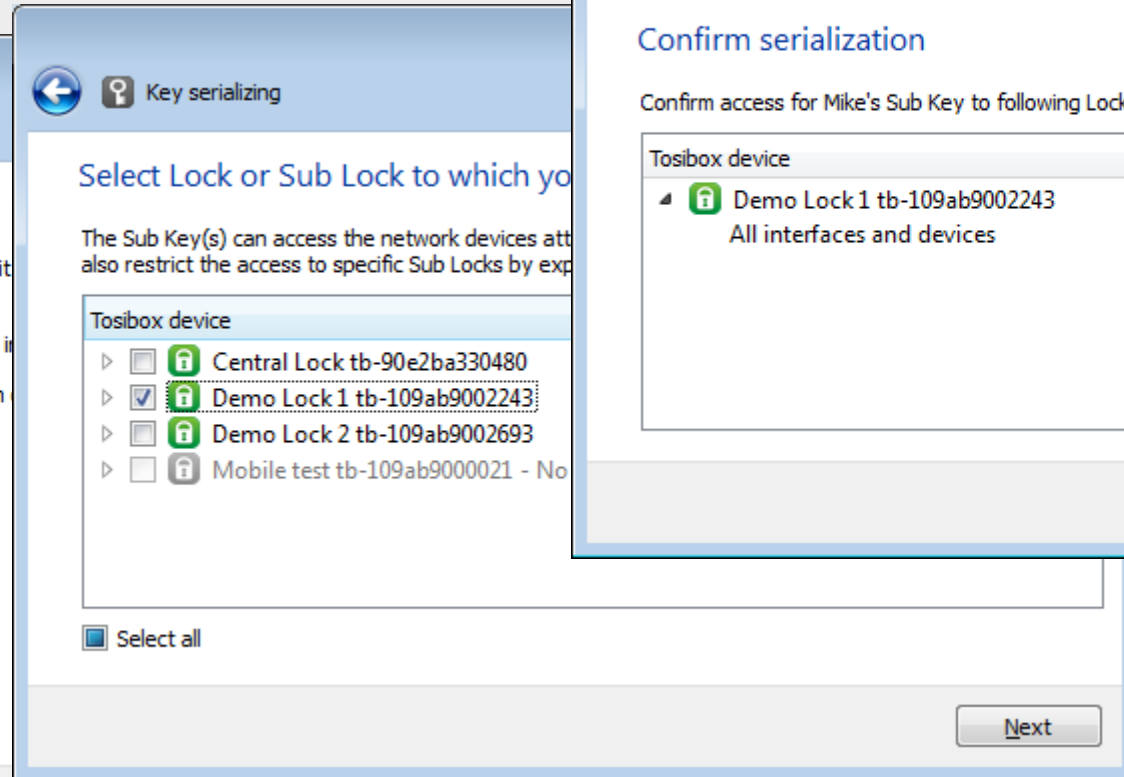
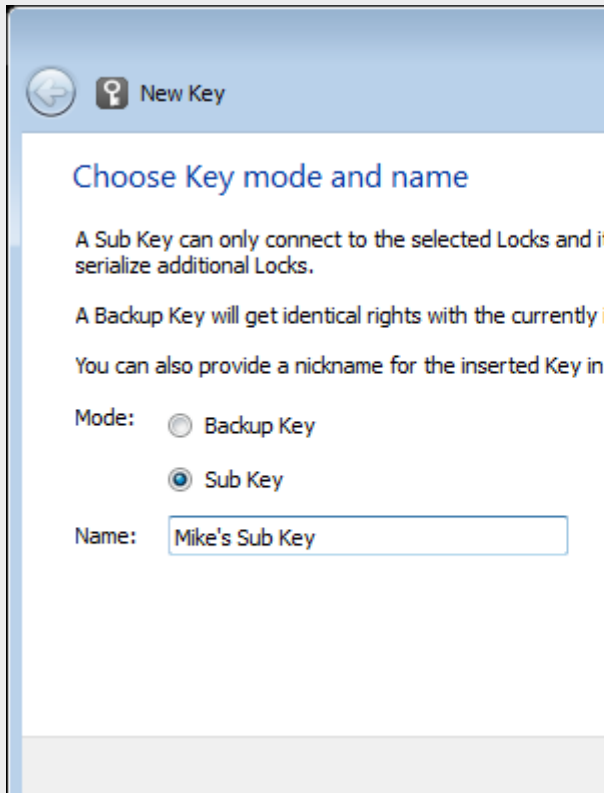


TOSIBOX®



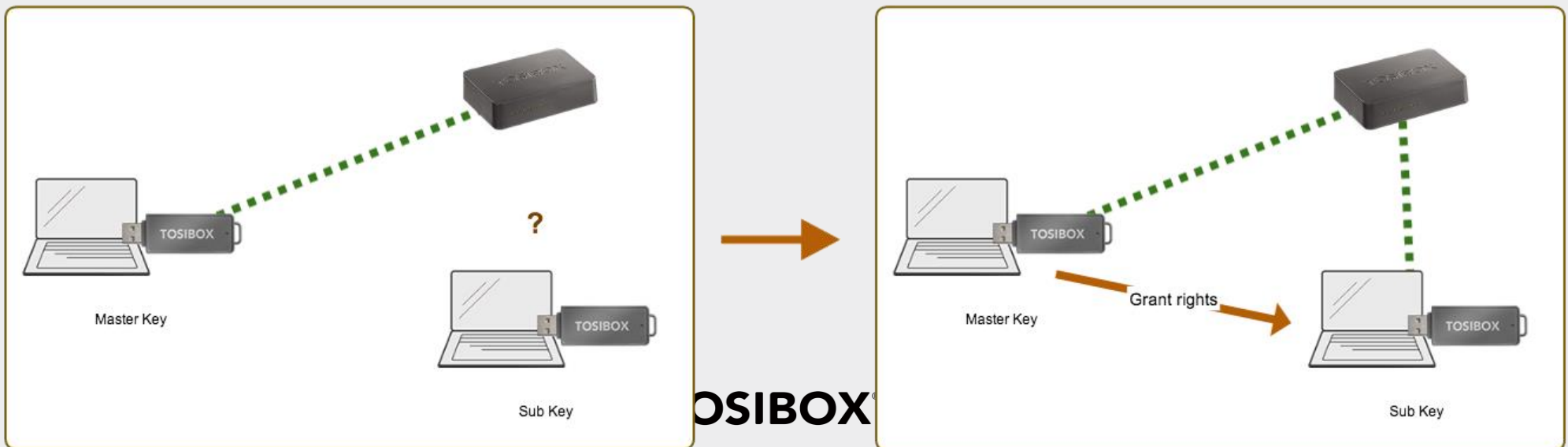
Creating Sub Keys

1. Start TOSIBOX Key with the Master Key
2. Insert a new blank Key
3. Follow the wizard



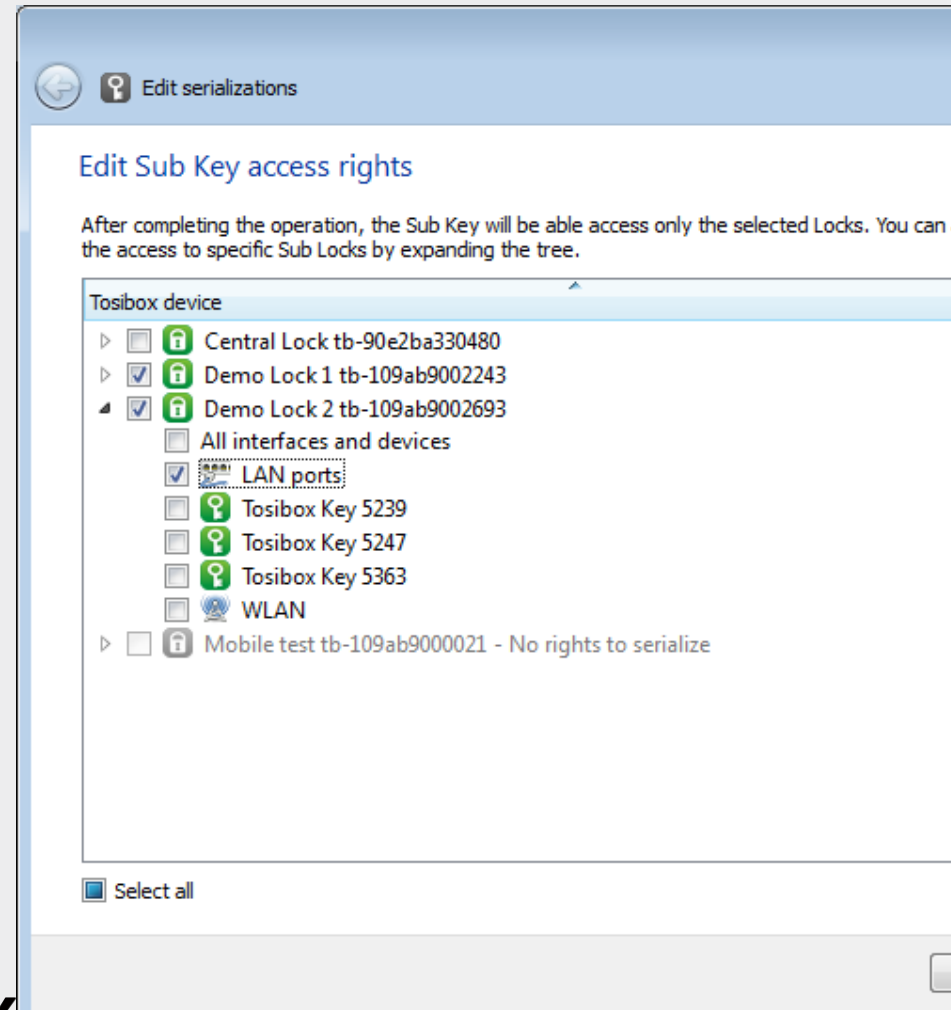
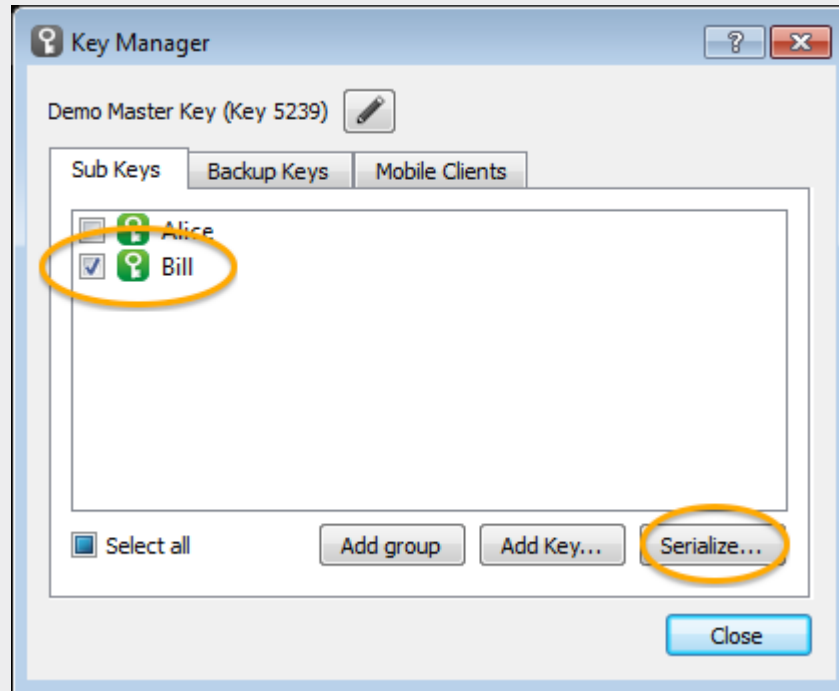
Remote serialization

- When a Sub Key is initially created, a trust relationship is formed between the Master Key and the Sub Key
- Based on this trust, it is possible to remotely grant additional rights to the Sub Key, or revoke rights to existing Locks
- Security is based on PKI: the messages are signed by the sender (Master Key) and verified at the receiving end (Lock and Sub Key)



Remote serialization

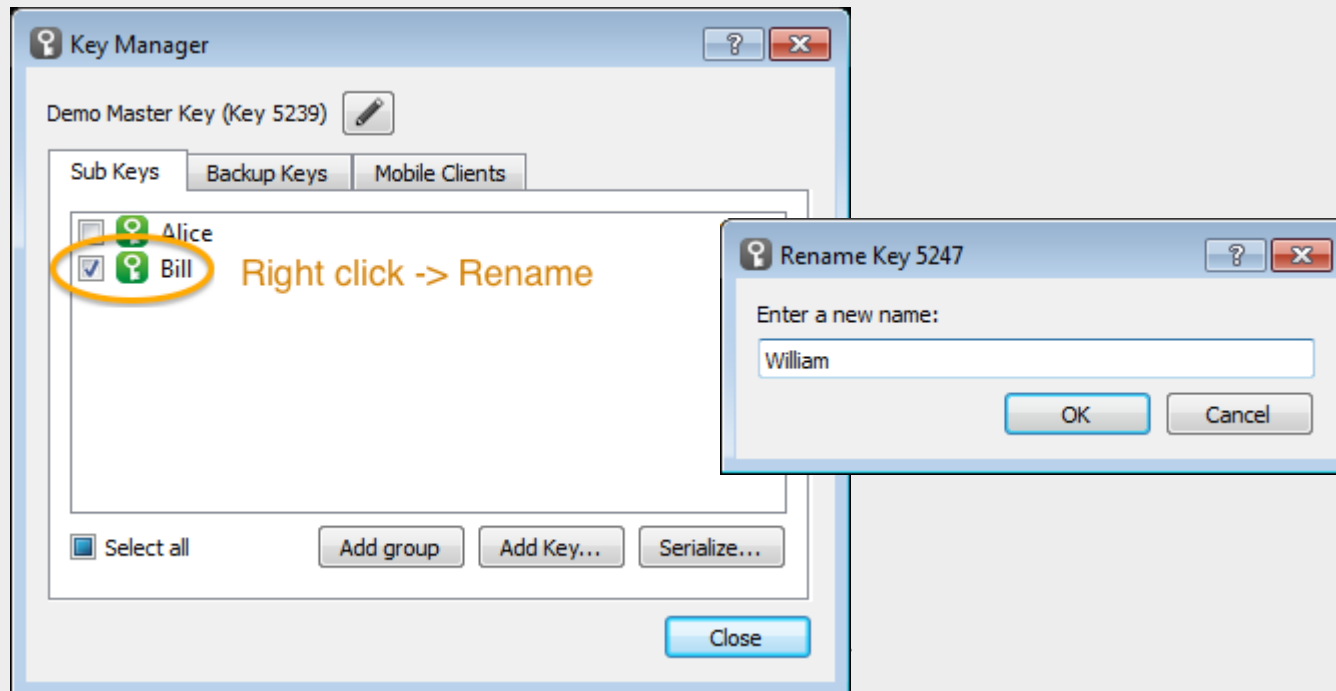
- *Manage Keys -> Select a Sub Key -> Serialize...*



TOSIBOX

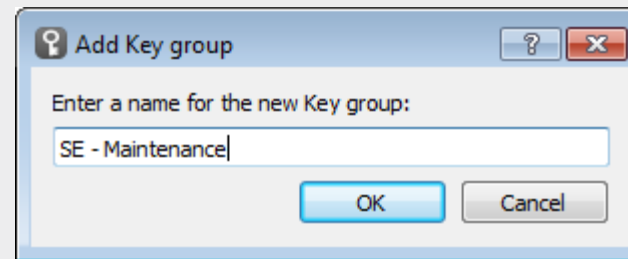
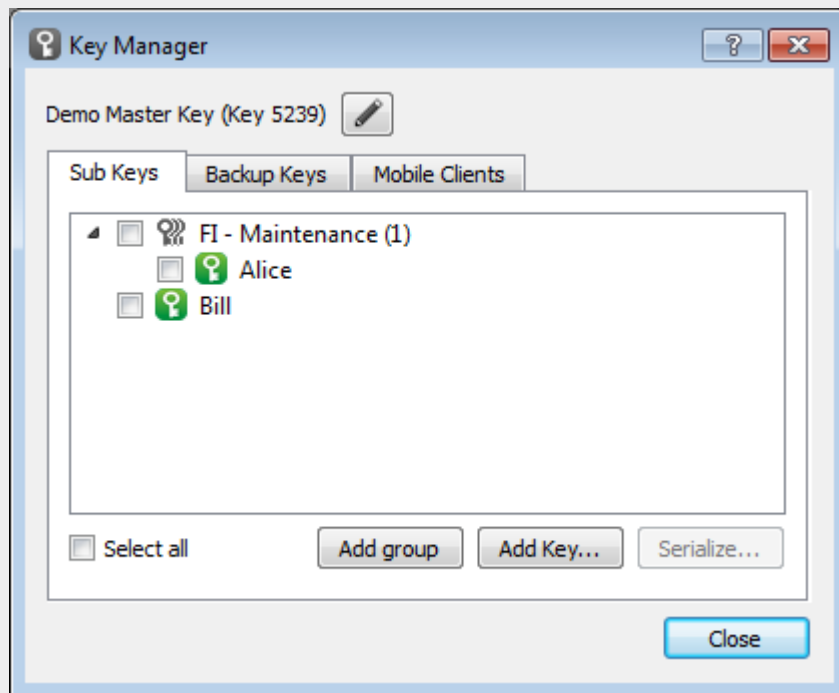
Naming and organizing Keys

- Sub Keys can be named by the Master Key when creating them and later from Key Manager window
- Key names are currently local to the Key they are named with (local nick names)



Naming and organizing Keys

- Sub Keys can also be organized into groups (new in TOSIBOX Key v2.10) for easier management (e.g. mass operations)
- Groups are kept synchronized across Backup Keys

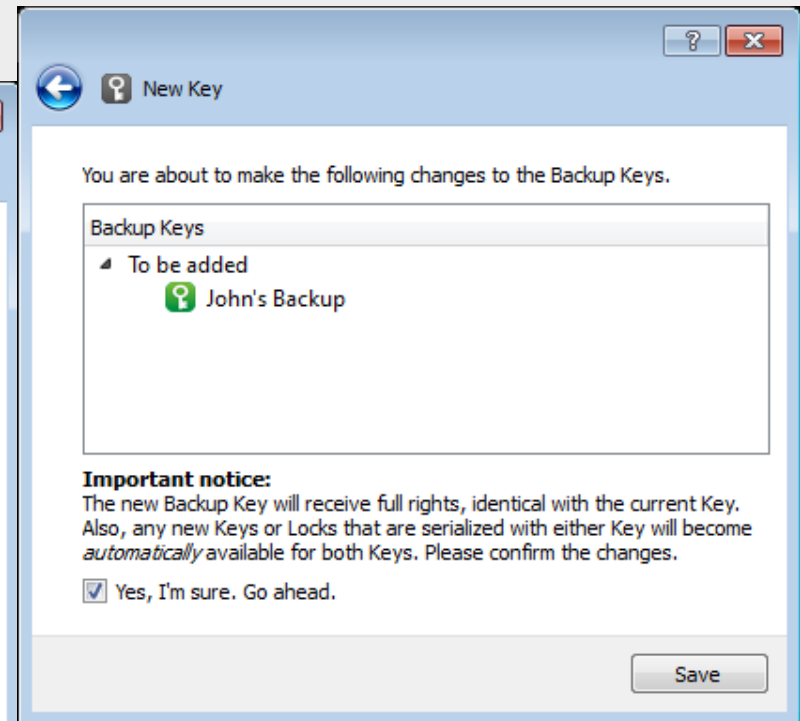
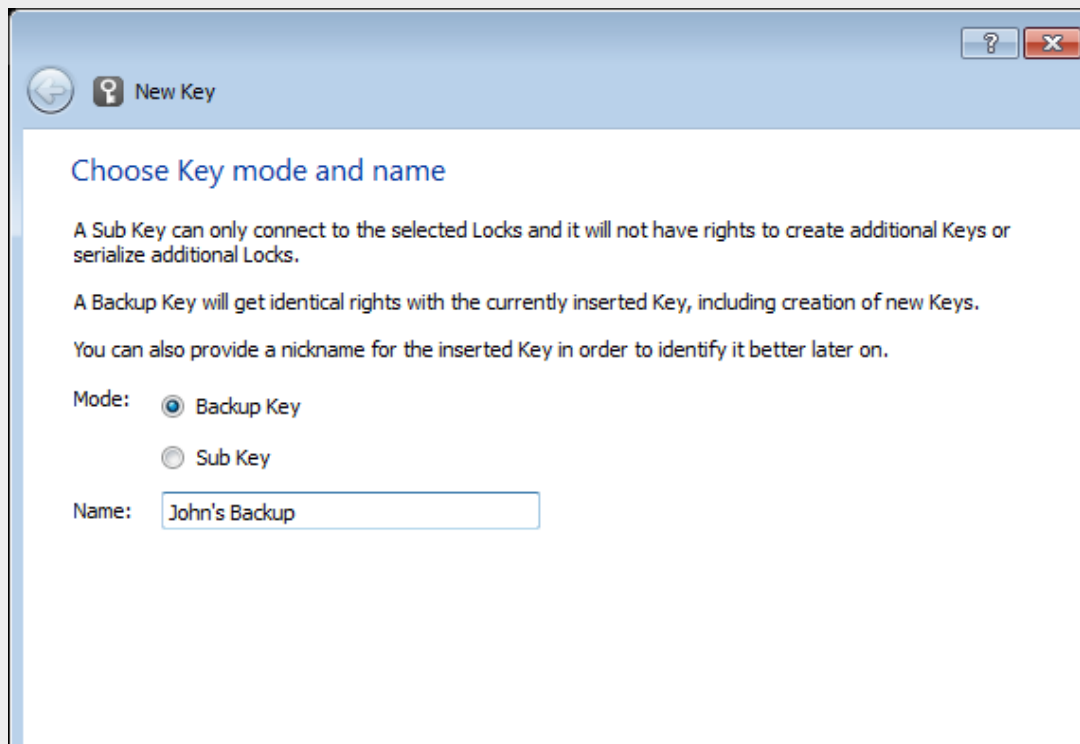


Backup Keys

- From any Master Key it is possible to create *Backup Keys* that can be used as
 - Spare Keys – kept in a safe place
 - Master Keys that can be used in parallel with the original Master Key
- Backup Keys have identical rights and they are automatically kept synchronized (over the Internet). Data that is synchronized:
 - Serialized Locks (for which the Key is a Master Key)
 - Sub Keys and groups
 - Other Backup Keys in the same “family”
- Any of the Backup Keys can revoke others later (e.g. if a Key goes missing or is stolen). A revoked Backup Key becomes an empty Key.

Backup Keys

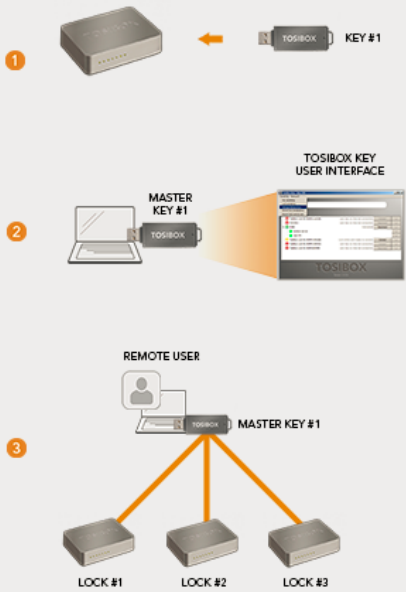
1. Start TOSIBOX Key with the Master Key
2. Insert a new blank Key
3. Choose Backup Key and follow the wizard



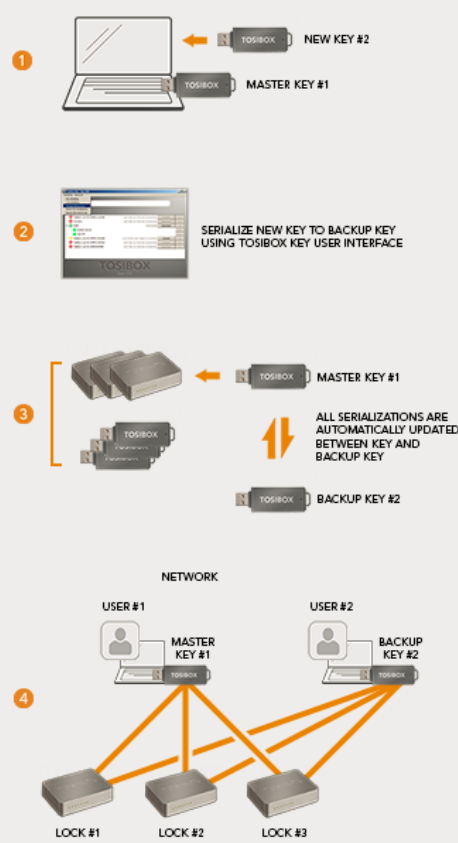
Summary

TOSIBOX® | TOSIBOX KEY FEATURES

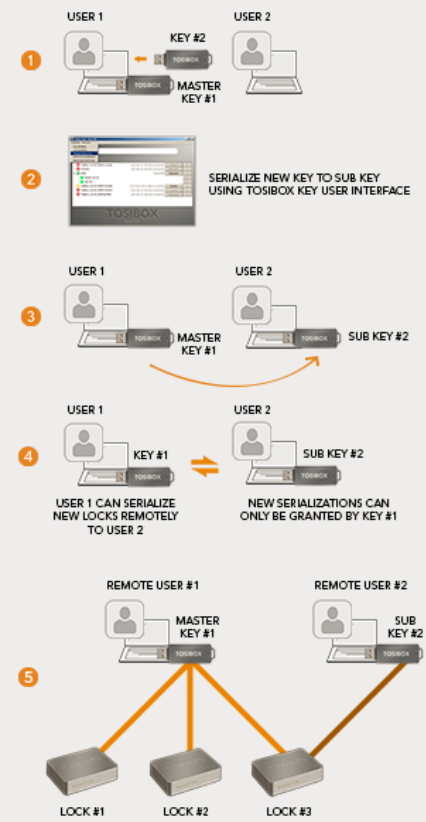
MASTER KEY



BACKUP KEY



SUB KEY



SUB KEY + MASTER KEY

