

TOSIBOX

610, 650, 670, 675, 695 Quick Start Guide

Copyright © Tosibox Oy, 2025

1 Matching your TOSIBOX® Node with the Key

1. Connect the operating voltage of 9-50 V DC to the Node and wait for 1 minute.
2. Insert the Key into the USB port of the Node. When the LED on the Key turns off, (after approx.10 seconds) the matching is complete, and you can remove the Key from the USB port.
3. Go to **3a** if you are connecting to the Internet using Ethernet connection or **3b** if setting up wireless connection. If deploying Nodes as DHCP client into existing networks, please see the TOSIBOX user manual.

2 Set Up Router

1. Connect ethernet cable into LAN port of TOSIBOX® Node and the other end of the cable into LAN port of your computer.
2. Visit 10.10.10.254 in your browser to set up your device.
3. Log in using "admin" account. The password can be found from the bottom of the Node.
4. TOSIBOX® Node needs an Internet connection to function. Go to **3a** if deploying into broadband networks (ethernet) or **3b** if deploying into wireless connection.

! Update the device software immediately when you are connected to the Internet. Go to Settings > Software update. If there is a software update available for the device, start the update by clicking Start software update.

3a Connect to the Internet using Ethernet connection

1. Connect your TOSIBOX® Node from the WAN port to the Internet with a fixed Ethernet cable.
2. When the WAN ETH LED is lit on the front plate of the Node, the Internet connection is working. If the light is not lit, investigate possible connectivity issues.

3b Set up wireless connection

Connect the device to the Internet using internal Modem (670, 675 and 695)

You can connect the device to the Internet with an internal Modem. Before inserting or removing the SIM card, disconnect the device power supply.

1. Install the antenna
2. Insert a SIM card
3. Select Network > Internal Modem and fill in the APN according to your mobile operator settings. Enter PIN code if necessary. Click Save.

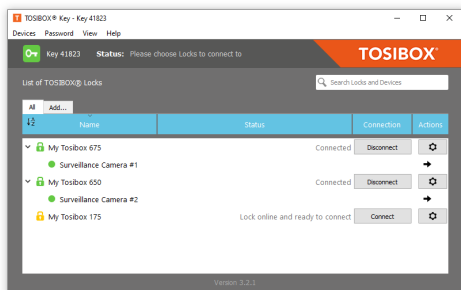
Connect the device to the Internet using wireless LAN (650, 675 and 695)

1. Attach WLAN antenna to the device.
2. Open the service connection to the device and log in with your credentials.
3. Configure wireless LAN settings at "Network > WLAN".
4. When the WAN WIFI LED is lit on the front plate of the Device, the WLAN connection is working.

! Position the antennas in orthogonal pattern, i.e. in such a way that they form 90 degrees angle between each other.

4 Using the Key

To install the Key software, insert the TOSIBOX® Key into the USB port of your computer.



The TOSIBOX® Key user interface shows all Nodes matched to the Key and the network devices connected to them. For more options, click or .

- The Node is connected to the Internet and the Key has a remote connection to the Node.
- The Node is connected to the Internet, but the Key doesn't have a remote connection to the Node.
- The Node is not connected to the Internet.

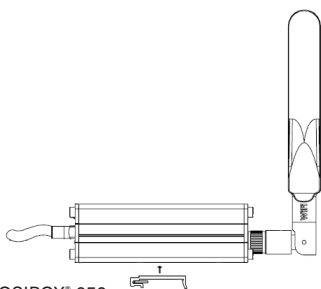
TOSIBOX

Mount DIN-Rail adapter as shown in picture in any position between the housing slots. Use the screws provided in the package.

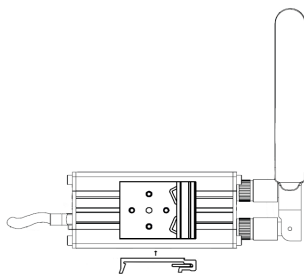


TOSIBOX® 610

Do you need more instructions?
Scan the QR code to visit our Knowledge Base.



TOSIBOX® 650



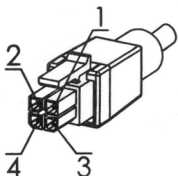
TOSIBOX® 670, 675 and 695

DECLARATION OF CONFORMITY

Hereby, Tosibox Oy declares that the radio equipment type 610, 650, 670, 675 and 695 are in compliance with Directive 2014/53/EU. The full text of the EU declaration of conformity is available at <https://www.tosibox.com/tosibox-for-sites>

Patented, incl. US8831020, US9900178, US14/119753, US14/39015

Power plug



1. Power / +VDC
2. GND / 0 VDC
3. Digital Input
4. Digital Output

FEDERAL COMMUNICATION COMMISSION INTERFERENCE STATEMENT

This device complies with FCC part 15 of the FCC rules. Operation is subject to the following two conditions: (1) This device may not cause harmful interference, and (2) this device must accept any interference received, including interference that may cause undesired operation. FCC Caution: Any changes or modifications not expressly approved by the party responsible for compliance could void the user's authority to operate this equipment.

FCC: Not applicable for TOSIBOX® 610 and 695
TOSIBOX® 650 FCC ID: 2AHCNLOCK675
TOSIBOX® 670 FCC ID contains XMR201807EG06A
TOSIBOX® 675 FCC ID: 2AHCNLOCK675 contains XMR201807EG06A

This radio device has been tested to operate with the external antenna types listed below with the maximum permissible gain and required antenna impedance for each antenna type indicated. Antenna types not included in this list, having a gain greater than the maximum gain indicated for that type, are strictly prohibited for use with this device.

TOSIBOX® 650 and 675: Wi-Fi monopole antenna, 50 ohm, max peak gain 3.5 dBi.

This equipment should be installed and operated with a minimum distance of 20 cm between the antenna and the user or bystanders.



FCC: Not applicable for TOSIBOX® 610
FCC and RCM: Not applicable for TOSIBOX® 695

Visit Support, download user manual
www.tosibox.com/support